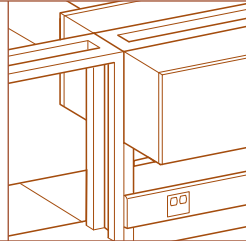
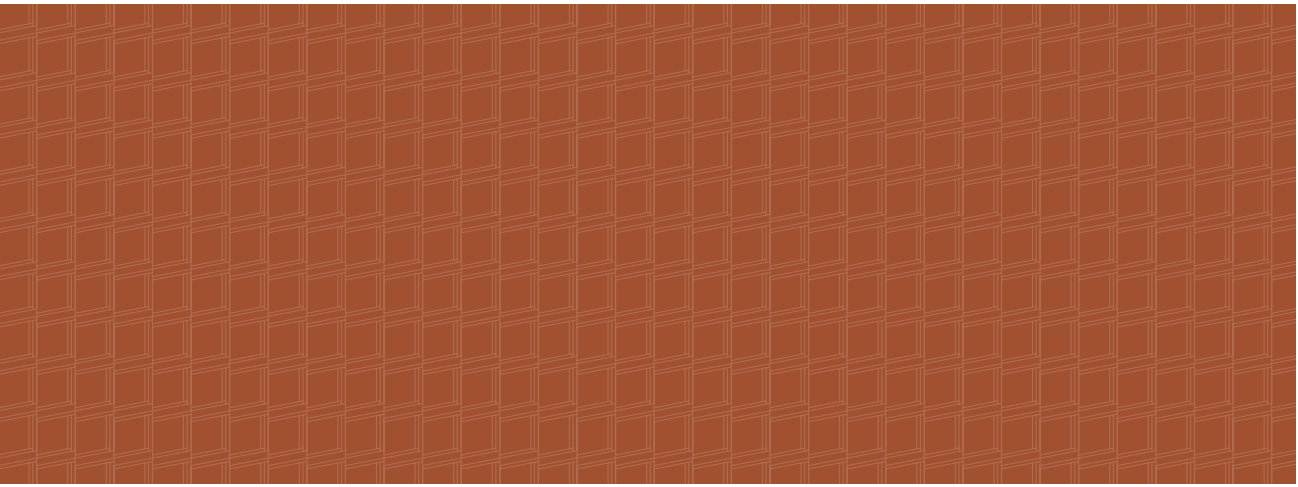


Herman Miller

LABORATORY

Flexible, cost-effective,
proven solutions





TIME FOR CHANGE

Put time on your side with our lab system. It gives you more options for increasing productivity and controlling costs, so your time is well spent.

- Our lab system changes easier—and faster—than any other offering on the market. Individual workers can adjust many components themselves so they work more comfortably and efficiently. Even rearranging on a larger scale requires little or no capital expenditure and few tools.
- Our experience designing and equipping labs spans nearly 30 years and thousands of labs around the world. Our consultants work with you to create an overall lab design that functions flawlessly now and remains open to whatever the future brings. Our worldwide network of resources responds quickly before, during, and after installation.
- Our system is built for clinical labs. We designed it to be flexible, durable, and easy to clean based on the stringent requirements of clinical labs, so you get the benefits of high performance.



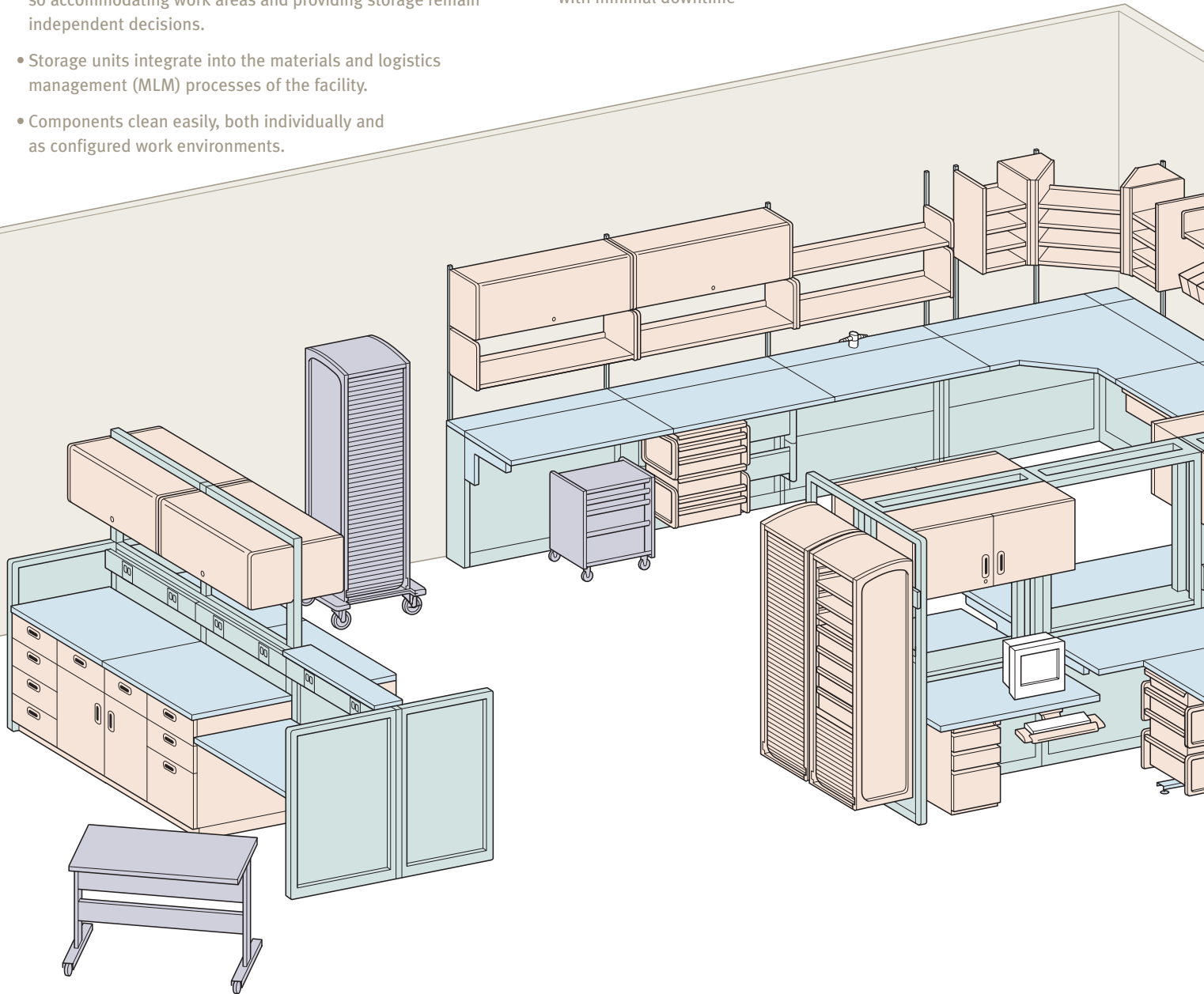
SETTING THE STANDARD FOR MODULARITY

Our modular lab system embodies the flexibility changing times demand. That's possible because of four key characteristics it possesses.

- A limited number of interchangeable parts in standard sizes combine and recombine for straightforward initial planning and easy rearranging in the future.
- Work surfaces are independent of under-counter storage so accommodating work areas and providing storage remain independent decisions.
- Storage units integrate into the materials and logistics management (MLM) processes of the facility.
- Components clean easily, both individually and as configured work environments.

These design features allow you to

- Change quickly and cost-effectively—anywhere from exterior walls to the center of the lab
- Use and reuse components in different locations and applications
- Integrate new technology and equipment with little effort
- Make small, incremental changes or major moves with minimal downtime



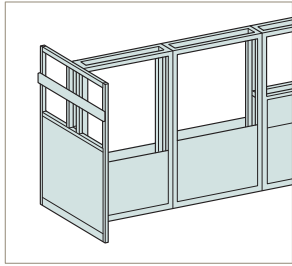
STRUCTURE

Modules, panels, and wall strips form the basis of our system. They install over finished floors to allow for easier change in the future. All have slotted channels along their vertical edges that allow components to attach anywhere from top to bottom. Modules and panels are 18-gauge welded steel and hold a 1,150-pound live load per side. Electrical and data route through module interior or wire chase rail that attaches to any structure.

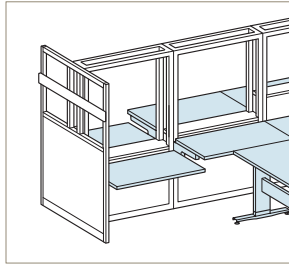
WORK SURFACES

Panel-hung and freestanding table work surfaces are available in laminate and Chem-Surf material, and support a 400-pound live load. Additionally, resin is available for panel-hung work surfaces. All work surfaces adjust vertically in 1-inch increments.

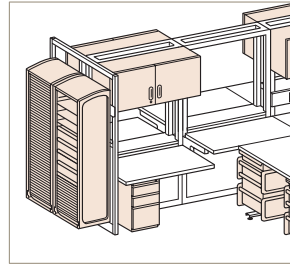
LAB BUILD SEQUENCE



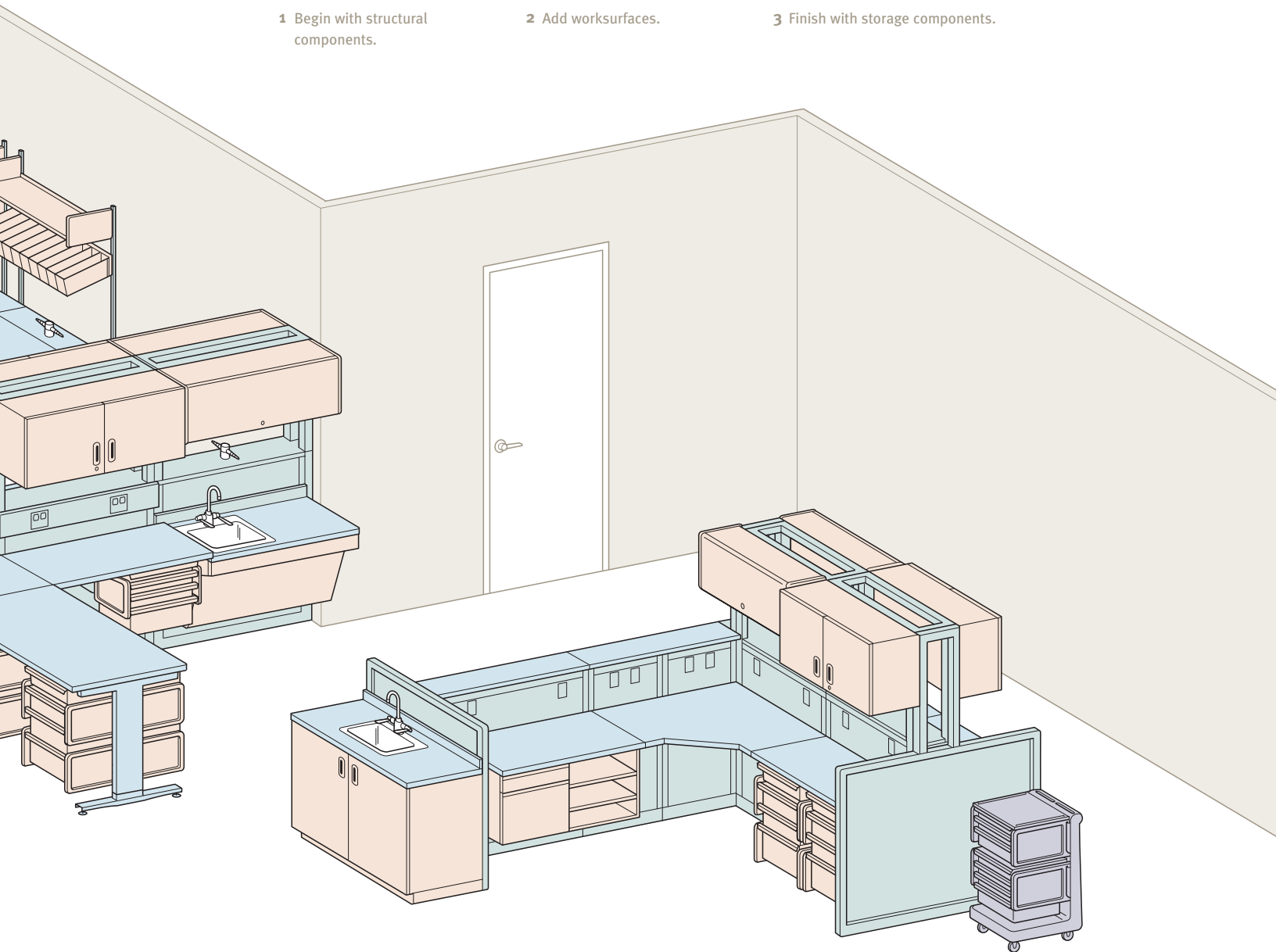
1 Begin with structural components.



2 Add worksurfaces.



3 Finish with storage components.



STORAGE

Overhead storage ranges from casework cabinets to steel shelves with or without doors. Under-counter storage is available in easy-to-clean high-impact plastic drawers, laminate casework, and steel cabinets.

TRANSPORT

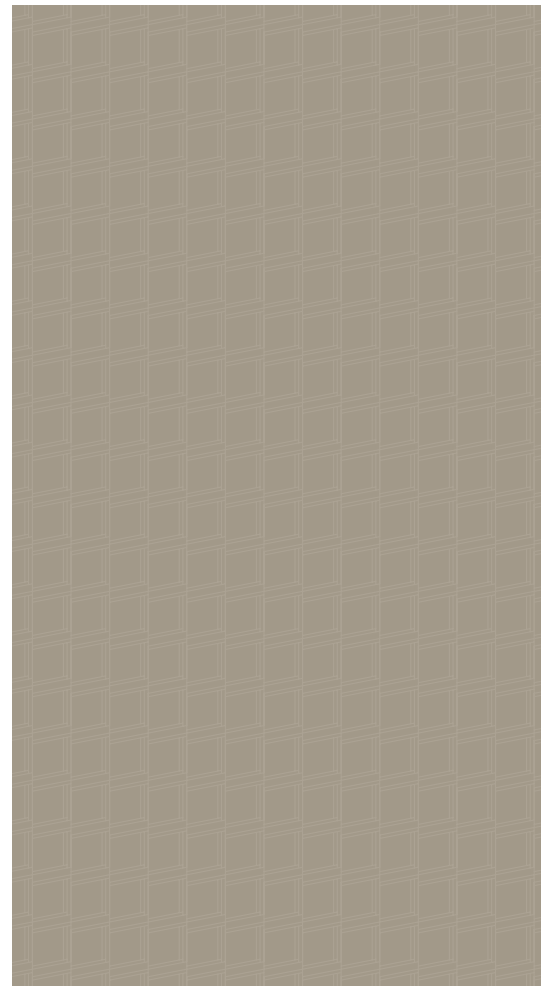
A selection of transport carts, process tables on casters, and movable lockers give workers the ability to arrange their areas in ways that allow them to work most efficiently. And this mobility allows them to change without hassles.

PERFORMANCE OVER TIME

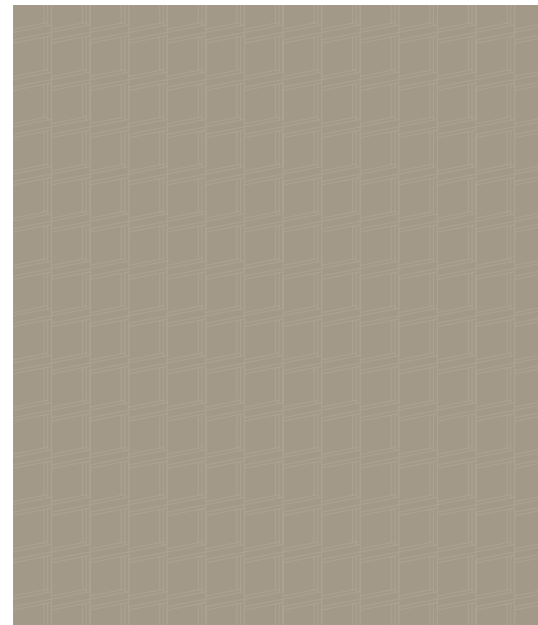
Our lab system helps you maintain a safe and healthful place for lab workers so they can contribute their best over the long haul.

- Ergonomically designed—All our components take human factors into account. Rounded edges promote safety. The ability to place frequently used items within comfortable reach, such as locating top-loading equipment low enough to avoid having to stand on a stool, reduces strain. Special products, such as keyboard trays and monitor stands, help labs comply with OSHA standards.
- Easily adjustable—From work surfaces to process tables to overhead storage, our products adjust in 1-inch increments. In most cases, one person using a Phillips screwdriver can adjust components so they're arranged to support their work style and make equipment and materials accessible.
- Quickly rearrangeable—The fact that our lab system rearranges so fast means people aren't forced to work uncomfortably when equipment, processes, testing protocols, or volume levels change. From the moment change occurs, you can ensure that the physical configuration of your lab makes for a healthy workplace.

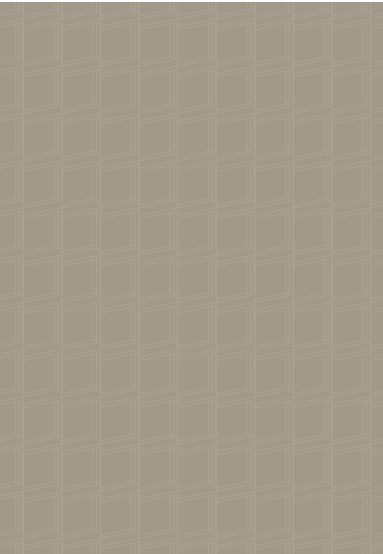




- 1 Doors on overhead units provide enclosed storage with the option for security locks keyed differently or alike. Shelves with small end panels can be positioned either flat or on an angle to display materials or gravity-fed medications.
- 2 Work surfaces feature high-impact edge banding that resists wear and heavy-duty, sandwiched construction that eliminates any exposed particle board.
- 3 Powder-coated steel shelves in overhead cabinets adjust up or down by changing screws in threaded inserts along the cabinet's side panel.
- 4 Support panels have a recessed filler that leaves room for electrical cords to go between it and the back edge of a work surface.
- 5 Access panels on modules allow easy access to utilities and have laser-cut knockouts for electrical or data junction boxes.
- 6 Adjustable-height process tables, shown here with casters, also come with glides and accept under-counter storage.
- 7 Doors on overhead cabinets provide enclosed storage with optional security locks. Wire chase rails include a horizontal raceway for data and electrical and incorporate a tool bar.
- 8 Wall strips attach to architectural walls, allow components to adjust in 1-inch increments, and provide the same load-bearing capacity as panels.









TIME TO PLAN FOR CHANGE

Over the years, we've helped laboratories around the world plan and design their facilities for maximum return on investment and great adaptability to change.

Our network of professional planners—located at authorized dealers throughout the world—can assist from beginning to end, from need statement to facility design to installation and fine-tuning.

In addition, you can call on the specialized expertise of our lab consultants. Their perspective is particularly valuable in the initial stages of planning to ensure that all areas of the lab—from clinical to administrative—meet today's needs while remaining open to handling tomorrow's.

Since change is constant, now's the time to opt for a truly flexible way to handle it. Choose Herman Miller for Healthcare and turn change to your advantage.

CREATING FLEXIBLE HEALTHCARE ENVIRONMENTS FOR OVER 30 YEARS.

 **HermanMiller** for Healthcare

PO Box 302
Zeeland, Michigan 49464-0302

Telephone: 616 654 8000 OR 800 628 0058
Facsimile: 616 654 7810
Web site: www.HermanMiller.com